

# Request for Advice or Ruling Ethics Committee

District & Regional STEM Fair	<a href="#">Vancouver District Science Fair (VDSF)</a> <a href="#">Greater Vancouver Regional Science Fair (GVRSF)</a>		Date	
Project Title				
	First Name	Last Name	Email	
Student 1				
Student 2				
Adult Supervisor				Phone:
Scientific Supervisor				Phone:
Chairs (District & Regional STEM Fair)	<a href="#">Justina Emily</a>	<a href="#">Chan (VDSF)</a> <a href="#">Gubski (GVRSF)</a>	<a href="mailto:vdsfprojects@vsb.bc.ca">vdsfprojects@vsb.bc.ca</a> <a href="mailto:chair@gvrzf.ca">chair@gvrzf.ca</a>	
Chief Judges (District & Regional STEM Fair)	<a href="#">Lana Leonard</a>	<a href="#">Chow (VDSF)</a> <a href="#">Foster (GVRSF)</a>	<a href="mailto:vdsfjudges@vsb.bc.ca">vdsfjudges@vsb.bc.ca</a> <a href="mailto:judging@gvrzf.ca">judging@gvrzf.ca</a>	

## Steps:

- Before starting**, if your project idea involves the participation of humans or the use of animals, familiarize yourself with the safety and ethics information on [mySTEMspace.ca](http://mySTEMspace.ca), and read the applicable [YSC safety and ethics policies](#).
- Complete this form to get advice from the Ethics Committee of the Greater Vancouver Regional Science Fair. Email it to [vdsfethics@gvrzf.ca](mailto:vdsfethics@gvrzf.ca) and [vdsfprojects@vsb.bc.ca](mailto:vdsfprojects@vsb.bc.ca) (include your teacher sponsor and project partner).

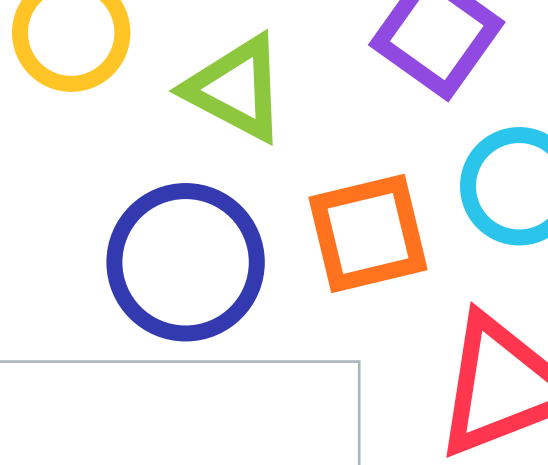
## Questions to answer on the next page:

### 1. Projects involving the participation of Humans - Low and High Risk

- Describe your proposed project in a paragraph or two
- Describe any special precautions you will take
- Where will you carry out these experiments?
- Who will be your adult supervisor, and what are their qualifications?
- How many people will participate in your experiment?
- What are their age ranges?
- Attach your Informed Consent [Letter](#) and [Permission Form](#) in the email

### 2. Projects involving the use of Vertebrate Animals, Cephalopods

- Describe your proposed project in a paragraph or two
- Describe any special precautions you will take
- Where will you carry out these experiments?
- Who will be your adult supervisor, and what are their qualifications?
- Where will you obtain the animals?
- How will they be cared for during your project?
- What will happen to the animals after your project is finished?
- Attach your [Research Plan](#) & [Research Approval Form](#) in the email



**Description of your idea:**



# Advice or Ruling from the Ethics Committee<sup>1</sup>

This section is to be left blank and will be completed by the Ethics Committee

Ethics Chair Regional STEM Fair (GVRSF)	Jeffrey Ma
Signature	(to be provided in e-mail granting final approval)
Date	

<sup>1</sup> You will be required to provide a copy of this ruling at the **Vancouver District Science Fair**, **Greater Vancouver Regional Science Fair**, and **Canada-Wide Science Fair**.

# Use of Vertebrate Animals in Research Approval Form

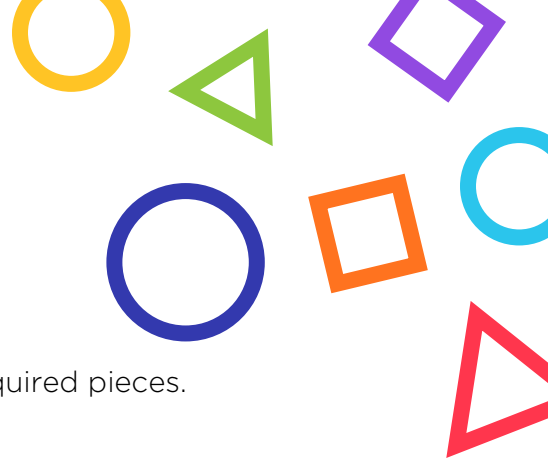
This form certifies that a project involving the use of vertebrate animals, cephalopods, decapod crustaceans, animal embryos, or animal tissues, is in full compliance with [Use of Vertebrate Animals, Cephalopods, and Decapod Crustaceans in Research](#) policy.

District & Regional STEM Fair	<a href="#">Vancouver District Science Fair (VDSF)</a> <a href="#">Greater Vancouver Regional Science Fair (GVRSF)</a>		
Date			
Project Title			
	First Name	Last Name	Email
Student 1			
Student 2			
Adult Supervisor <sup>1</sup>			Phone #:
Scientific Supervisor			Phone #:
Ethics Chair Regional STEM Fair	<a href="#">Jeffrey</a>	<a href="#">Ma</a> (GVRSF)	<a href="mailto:vdsfethics@gvrsf.ca">vdsfethics@gvrsf.ca</a>
Chief Judges (District & Regional STEM Fairs)	<a href="#">Lana</a> <a href="#">Leonard</a>	<a href="#">Chow</a> (VDSF) <a href="#">Foster</a> (GVRSF)	<a href="mailto:vdsfjudges@vsb.bc.ca">vdsfjudges@vsb.bc.ca</a> <a href="mailto:judging@gvrsf.ca">judging@gvrsf.ca</a>
This project involves:	Vertebrate animals, incl. cephalopods or decapod crustaceans		Animal tissue

## Ethics Approval Checklist

- I have familiarized myself with the safety and ethics information on [mySTEMspace.ca](#) and read the [Ethics in STEM Projects](#) document.
- I have read and understood [Use of Vertebrate Animals, Cephalopods, and Decapod Crustaceans in Research](#) policy
- I have completed and included the **Request for Advice or Ruling Ethics Committee** form
- I have completed and included a [Use of Animals Research Plan](#)
- I have completed this form, with all required information and signatures
- If I choose to participate, I understand that I will need to provide this completed form, Use of Animals Research Plan and Request for Advice or Ruling at my **district science fair**, **regional STEM fair** and the Canada-Wide Science Fair levels.

<sup>1</sup> This person can also be the Scientific Supervisor if they are qualified to support the project's area of STEM.



The above information is correct, and I have completed all required pieces.

\_\_\_\_\_  
Signed - Student 1

\_\_\_\_\_  
Date

\_\_\_\_\_  
Signed - Student 2

\_\_\_\_\_  
Date

---

*To be completed by your Adult Supervisor and Scientific Supervisor*

## Ethics Approval

I certify that this project involving the significant use of humans is in full compliance with the [Use of Vertebrate Animals, Cephalopods, and Decapod Crustaceans in Research](#) policy, and that it is eligible for the **Vancouver District Science Fair**, **Greater Vancouver Regional Science Fair** and, if applicable, the Canada-Wide Science Fair.

\_\_\_\_\_  
Signed - Adult Supervisor

\_\_\_\_\_  
Date

\_\_\_\_\_  
Role (teacher, parent, guardian, mentor etc.)

\_\_\_\_\_  
Signed - Scientific Supervisor

\_\_\_\_\_  
Date

\_\_\_\_\_  
Role/STEM Expertise

May be required, depending on your region:

[\(to be provided in e-mail granting final approval\)](#)

\_\_\_\_\_  
Signed - Ethics Chair (GVRSF)

\_\_\_\_\_  
Date

# Use of Animals Research Plan Template

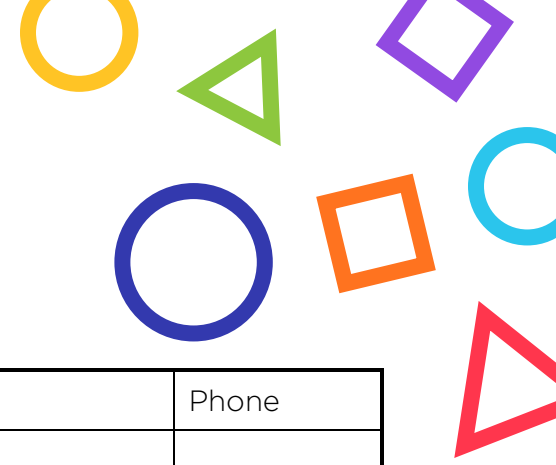
Good STEM is ethical STEM! It is important to make sure your idea will not harm or be unethical toward animals. If your idea involves animals, either invertebrate or vertebrate, **before beginning** any animal testing, you must prepare a plan to follow using this template. It is a simple way to make sure you're doing ethical STEM and taking the best care of any animals involved. Familiarize yourself with the safety and ethics information on [mySTEMspace.ca](https://mySTEMspace.ca), and read Youth Science Canada's [Use of Vertebrate Animals](#) or [Use of Invertebrate Animals](#) policy.

Develop and share this plan with your adult supervisor – they can be a teacher, parent, guardian, mentor, or anyone supporting you with your idea.

## Instructions:

1. **Adult and Scientific Supervisor(s)** Who will be supporting you with your idea? When working with animals, it is important to also have a scientific supervisor. Your adult supervisor can be your scientific supervisor too, if they are qualified to support you in the area of STEM you are working in.
2. **Data Collection** When will you start and stop collecting data from the animal(s)?
3. **Location** Where you will be collecting your data?
4. **Purpose** What is your idea looking to achieve? Briefly explain the research you did to support your idea. Explain the general procedure you will be using.
5. **Animals**
  - a. Provide the scientific and popular name of the animal(s) you plan to use.
  - b. How many animals will be used?
  - c. What observations and/or measurements will be done on the animals?
6. **The Three R's - Replacement, Reduction and Refinement** How will you use these principles when developing your procedure? You can learn more about The Three R's principles at [nc3rs.org.uk/the-3rs](https://nc3rs.org.uk/the-3rs)
7. **Risks** What are the potential risks in your idea? Write a complete and clear description of all known or anticipated risks, and how you will address them.
8. **What are the potential benefits?** Your idea must have some benefit in order to justify using animals. Describe known and/or potential benefits to the animals and/or society. If this idea has already been tested, come up with a new idea.
9. **Is this a continuation of a previous project?** If so, give a brief summary of the previous project.

If you choose to participate in a STEM fair, you may be required to share this plan.



### 1. Adult and Scientific Supervisor(s)

	First Name	Last Name	Email	Phone
Adult Supervisor <sup>1</sup>				
Scientific Supervisor				
Additional mentors				

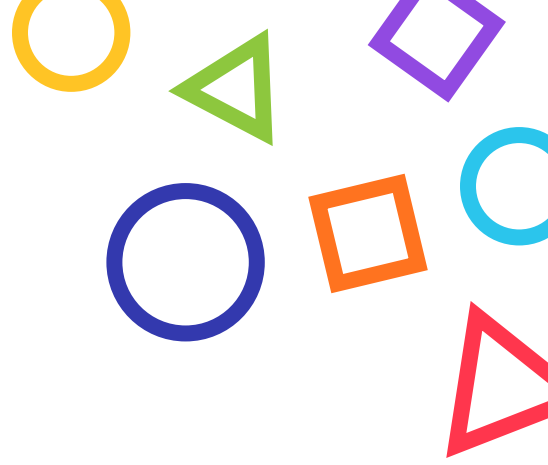
### 2. Data Collection

Start Date	
End Date	

### 3. Location

---

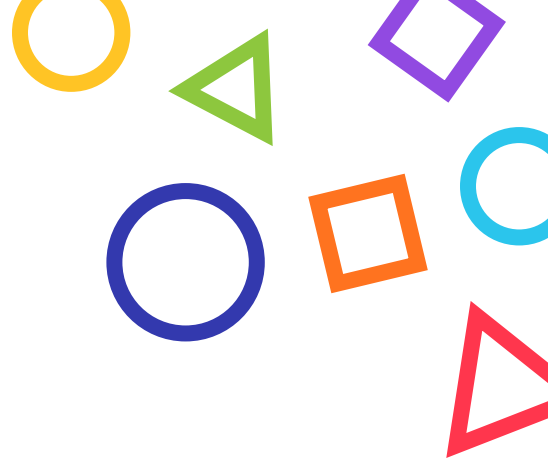
<sup>1</sup> This person can also be your scientific supervisor, if they are qualified to support you in the area of STEM you are working in.



#### 4. Purpose

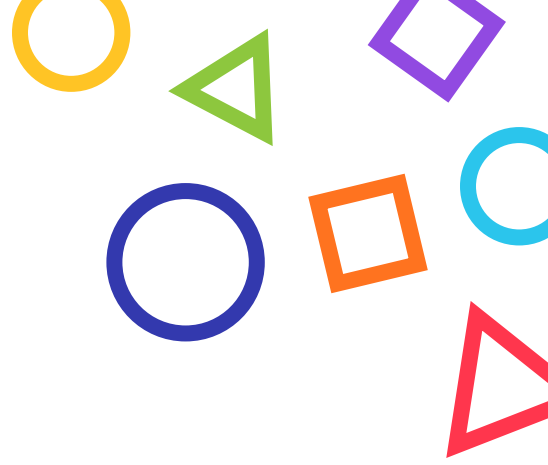
#### 5. Animals





## 6. The Three R's

## 7. Risks



**8. What are the potential benefits?**

**9. Is this a continuation of a previous project?**