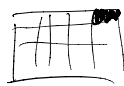
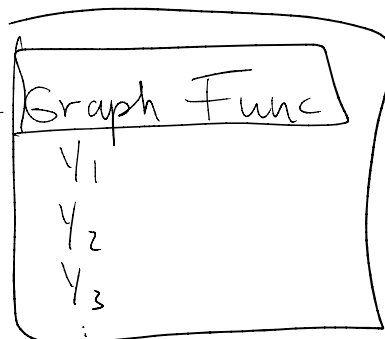


on/off

→ main menu



graph



F1

F2

F3

F4

F5

F6

← bottom of screen

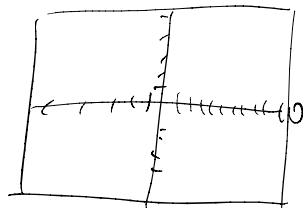
shift (above buttons)

shift F3

View Window

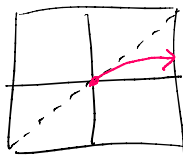
X-??

X, θ, T

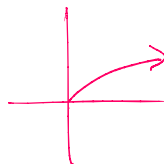


$$y = x$$

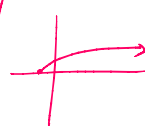
line



$$y = \sqrt{x}$$



$$y = \sqrt{x+1}$$



graphing

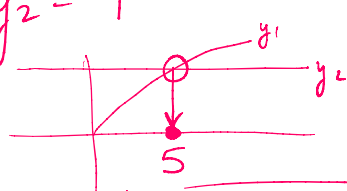
$$\sqrt{3x+1} + x = 9$$

2 equations

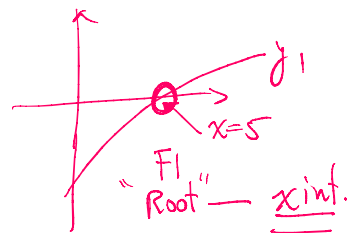
1 equation

$$y_1 = \sqrt{3x+1} + x$$

$$y_2 = 9$$



$$y_1 = \sqrt{3x+1} + x - 9$$



10/40 # 7, 8

P 140 # 7.8