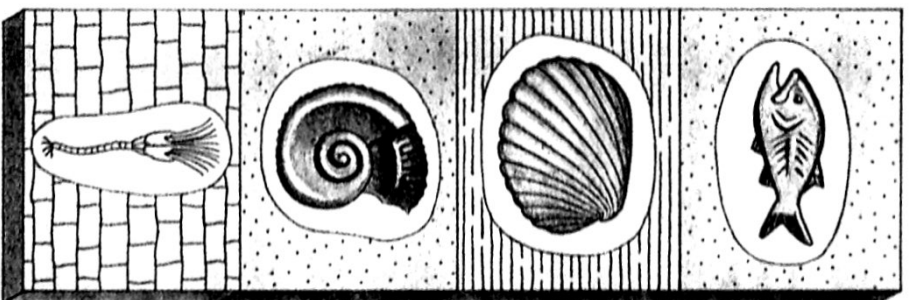
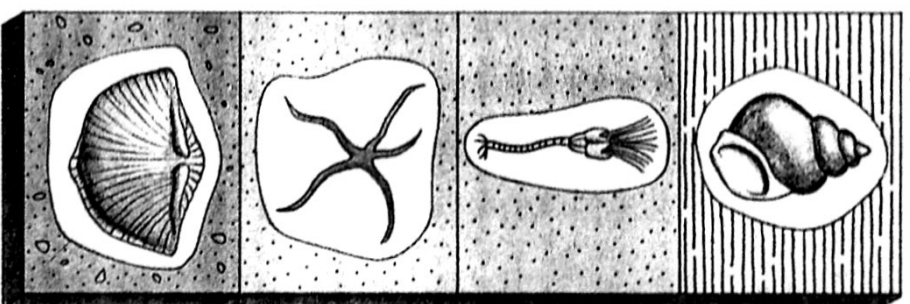


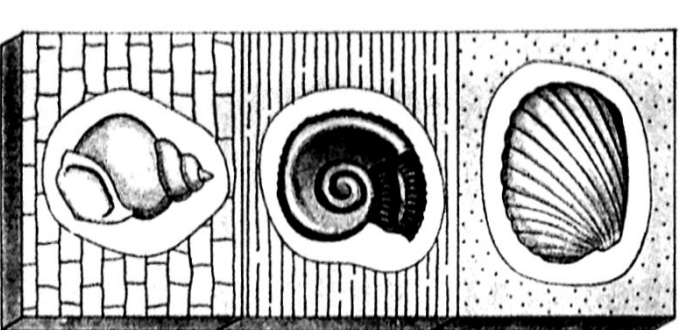
locality 1



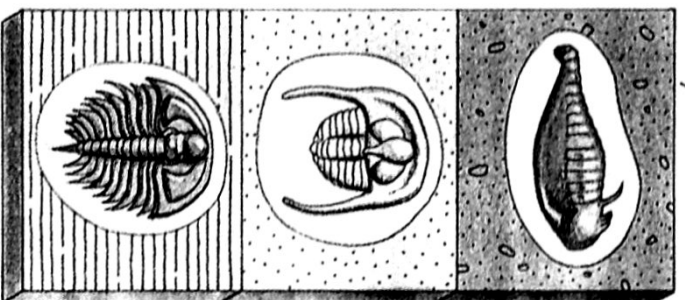
locality 2



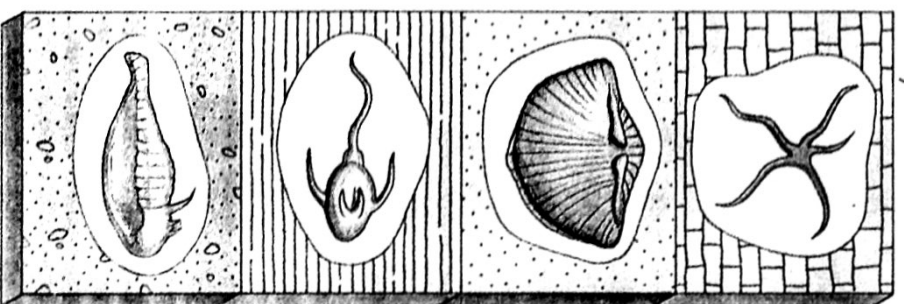
locality 3



locality 4



locality 5



locality 6

Key

Fossil	Type and period
	crinoid, Permian
	trilobite (Olenellus), Cambrian
	jawless fish, Devonian
	starfish, Pennsylvanian
	trilobite, Ordovician
	snail, Triassic
	eurypterid, Silurian
	ammonite, Jurassic
	brachiopod, Mississippian
	bony fish, Cenozoic
	clam, Cretaceous

FIGURE 12.14 ▲
Geological cross-sections representing sedimentary rocks from six localities.

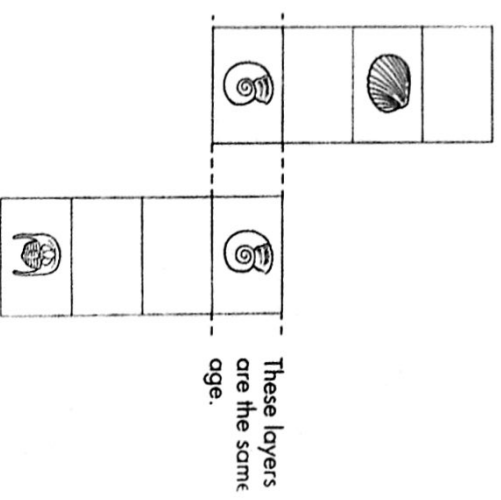


FIGURE 12.15 ▲
Align the columns in Figure 12.14 so that layers of similar age are matched.