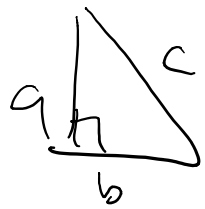


Quest Monday

1.5 - The pythagorean theorem



$$a^2 + b^2 = c^2 \quad a^2 = c^2 - b^2$$

- ① Find a leg (a or b)
- ② find the hypotenuse.

1.6 \rightarrow checking right angle triangles using the pythagorean theorem
 \rightarrow pythagorean triples

1.7 \rightarrow word problems involving pythagorean theorem, right triangles

Practice for the Quest
p. 56 # 18 - 27

Calculators are allowed, NOT phone calculators, if you don't bring one

you don't get to use one.