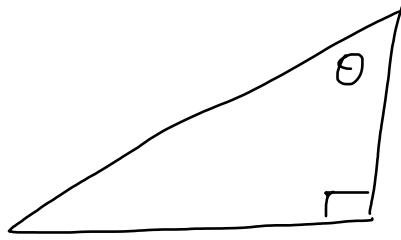
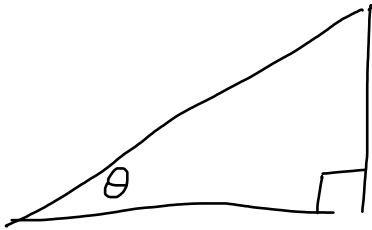


A&W Math 11: Unit 3: Trigonometry of Right Triangles

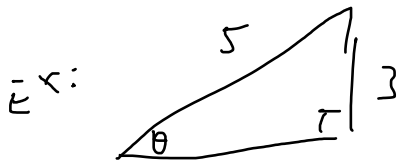
A) Remember :



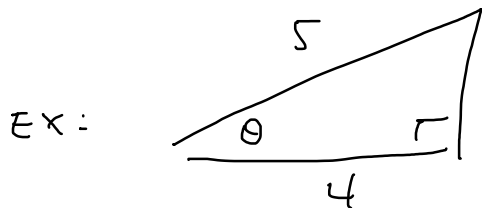
and SOH means:

CAH means:

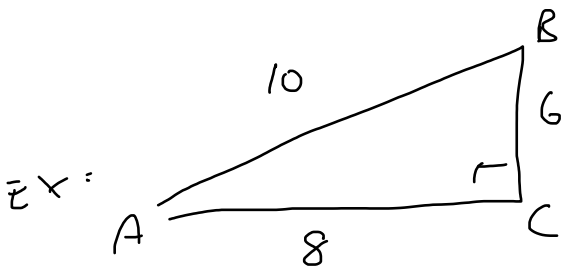
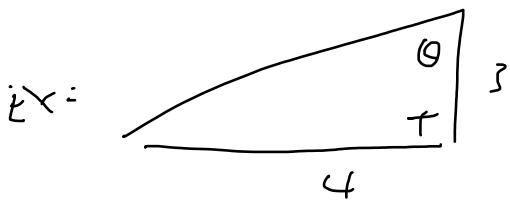
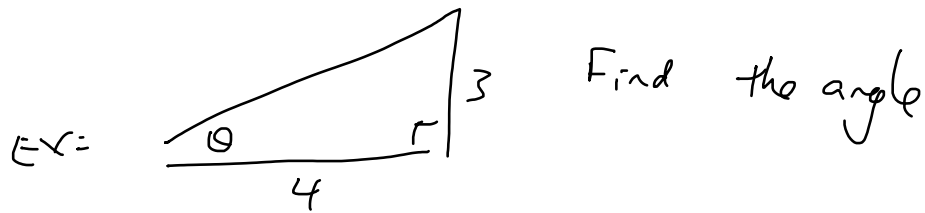
TOA means:



Find the angle



Find the angle

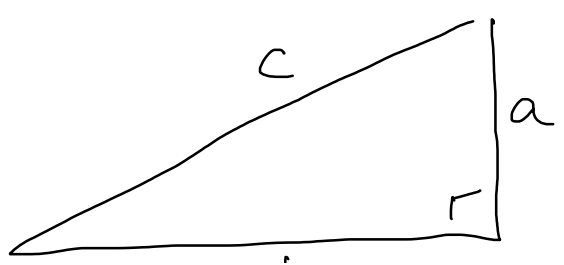


$$\sin \theta = \frac{6}{10}$$

$$\sin \theta = \frac{8}{10}$$

$$\tan \theta = \frac{6}{8}$$

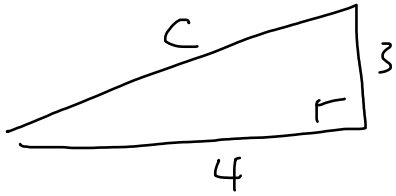
B) Remember Pythagorean theorem?



$$a^2 + b^2 = c^2$$

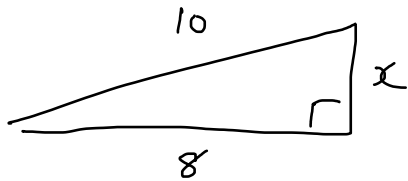


Ex:



Find "c"

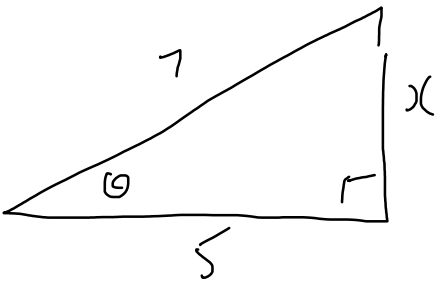
Ex:



Find "x"

C) Put SOH CAH TOA and Pythagorean Theorem questions together:

Ex:



i) Find the angle

ii) Find the missing side.