

Topic: 4.3 Surface Area of a Right Rectangular Prism

Name: _____

Class: Math 8

Date: _____

Questions/Main Ideas:

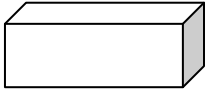
Notes:

Learning Intention:

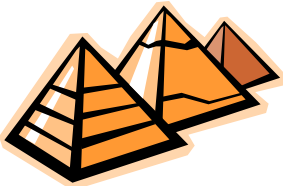
Find the surface area of a right rectangular prism.

Quick Review:

What the heck is a “right rectangular prism” a box!



What is the difference between a prism and a pyramid.



A prism has two sides that are congruent and parallel. A pyramid has sides that are triangular in shape and meet a point.

Surface Area of a Rectangle = Length x Width

Example:

12 cm



5 cm

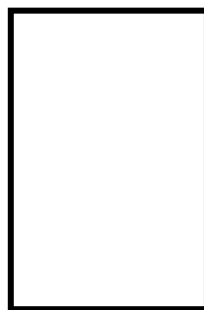
$$\text{Area} = L \times W$$

$$A = 12 \times 5$$

$$A = 60 \text{ cm}^2$$

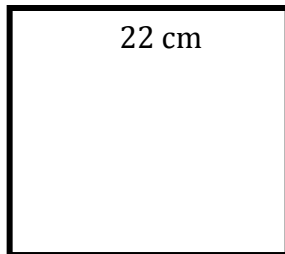
Try these

7 cm



14 cm

22 cm



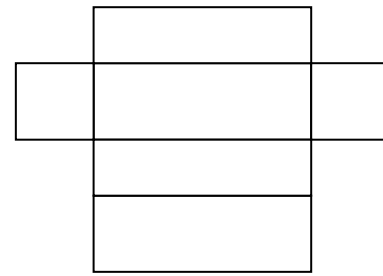
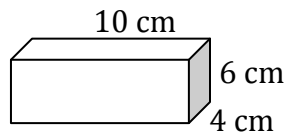
20 cm

2 cm

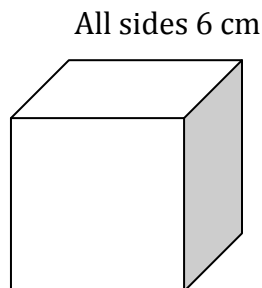
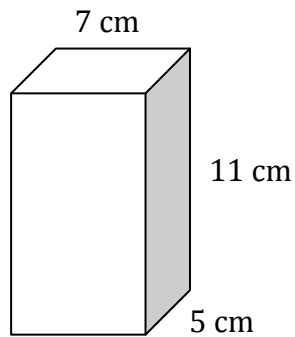


46 cm

A Right Rectangular Prism is made up of rectangles. What is the pattern for the sides?



How about a shortcut?



Problem Solving:

A right rectangular prism has faces with these areas: 12 cm^2 , 24 cm^2 and 18 cm^2 . What are the dimensions of the prism?

Next Step:

p 186 # 4, 5, 6, 11, 15