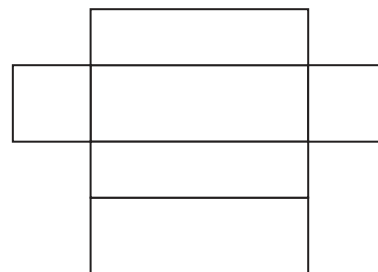
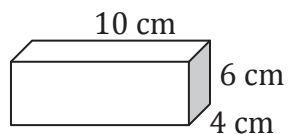
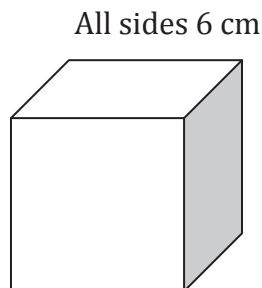
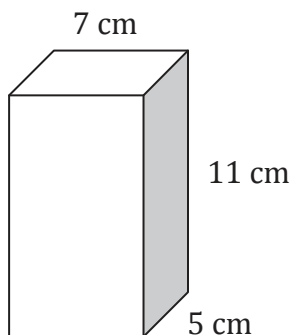


A Right Rectangular Prism is made up of rectangles. What is the pattern for the sides?



How about a shortcut?



Problem Solving:

A right rectangular prism has faces with these areas: 12 cm^2 , 24 cm^2 and 18 cm^2 . What are the dimensions of the prism?

Next Step:

p 186 # 4, 5, 6, 11, 15