

Add/Sub Integers

Thursday, September 19, 2019 11:44 AM

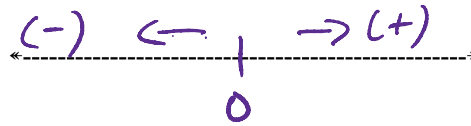
INTEGERS - ADDING/SUBTRACTING

Name: _____ Blk: _____

- I can add/subtract integers = level 2
- I can model the addition/subtraction of integers = level 3/4

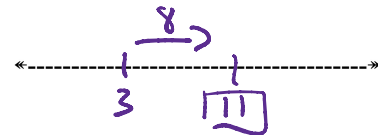
1. Number Lines

- Number lines are a useful way to model addition and subtraction
- Number lines are always written such that the numbers get more positive as you move to the right and more negative as you move to the left



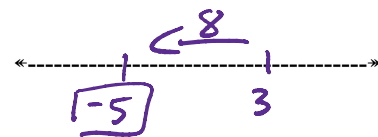
Eg. $3 + 8 = 11$

- Start at 3
- $+8$ = move 8 spaces to the right/left



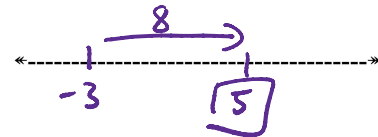
Eg. $3 - 8 = -5$

- Start at 3
- -8 = move 8 spaces to the right/left



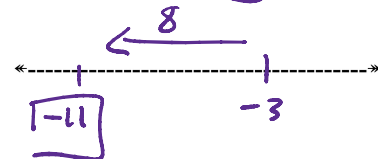
Eg. $-3 + 8 = 5$

- Start at -3
- $+8$ = move 8 spaces to the right/left



Eg. $-3 - 8 = -11$

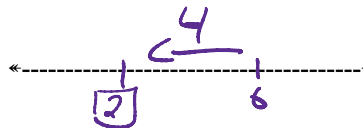
- Start at -3
- -8 = move 8 spaces to the right/left



Double Signs

- Whenever you see a double sign, change it to a single sign
- $++/- - \rightarrow +$
- $+/-+ \rightarrow -$

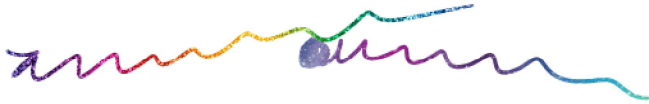
Eg. $6 + (-4) = 6 - 4 = 2$



Eg. $-5 - (-3) = -5 + 3 = -2$



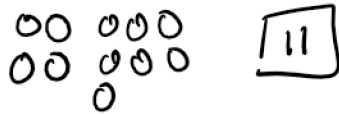
2. Colored Tiles



- **Shaded tiles** (usually red) = ●● = **NEGATIVE** numbers
- **White tiles** = ○ = **POSITIVE** numbers
- **Zero Pair** = ●○ = **ZERO TOGETHER**
- First number indicates how many tiles you start with and what color they are
- +/- indicates if you are adding tiles or removing them
- Second number indicates how many tiles and what color

Eg. $4 + 7 = 11$

- Start with 4 red/white tiles
- Add/Remove 7 red/white tiles



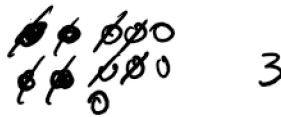
Eg. $4 - 7 = -3$

- Start with 4 red/white tiles
- Add/Remove 7 red/white tiles



Eg. $-4 + 7 = 3$

- Start with 4 red/white tiles
- Add/Remove 7 red/white tiles



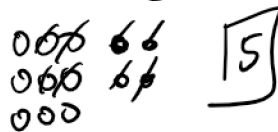
Eg. $-4 - 7 = -11$

- Start with 4 red/white tiles
- Add/Remove 7 red/white tiles



Eg. $9 + (-4) = 5$

- Start with 9 red/white tiles
- Add/Remove 4 red/white tiles



Eg. $9 - 4 =$

- Start with 9 red/white tiles
- Add/Remove 4 red/white tiles

